



*Tonino Lamborghini*

RESIDENCES  
RAS AL KHAIMAH

AL MARJAN ISLAND





PRESENTING ITALIAN LUXURY ON  
**AL MARJAN ISLAND**



INTRODUCING  
TONINO LAMBORGHINI RESIDENCES



# THE ARCHITECT'S DESIGN PHILOSOPHY

Guided by the Tonino Lamborghini ethos of elegance, uncompromised style, design and innovation, Tonino Lamborghini Residences by BNW Developments in RAK is conceived not merely as a residence but as an architectural statement where Italian sophistication merges with the elemental beauty of sea and sand. The design translates the rhythm of waves and dunes into cascading terraces and sky gardens, balancing exclusivity and openness through private villas and mansions alongside vibrant communal realms. Ultimately, it is a legacy of lifestyle and a timeless expression of identity, aspiration, and belonging on Ras Al Khaimah's coastline.

CREATIVE DIRECTION  
MRS. ANGELA KRIEGER

INTERIOR DESIGN ARCHITECT  
MR. CARLOS ROSSI



Al Marjan Island



64.4 m



2B+G+15+R



**PALAZZO DEL VIGNOLA XVI C.**

TONINO LAMBORGHINI HQ

BOLOGNA, ITALY



EVERYDAY RITUALS  
**TRANSFORMED INTO LIFESTYLE EXPERIENCES**



 *Tonino Lamborghini*



ISLAND PRIVILEGE  
**EVERYDAY LIFE WITH POISE**





EXCLUSIVITY AND HORIZON  
**IN PERFECT BALANCE**

# GRAND, CASCADING COASTAL MAJESTY

Tonino Lamborghini Residences' elevation draws a sculpted coastal profile, its cascading terraces and sky gardens tuned to the island's prevailing winds and tidal rhythms. A contemporary yet enduring language guides every line: assertive forms moderated by tactile, natural textures and discreet metallic accents refined by Tonino Lamborghini's iconic lines and elements. Terraces are carefully proportioned to maintain views, provide shade along the promenades and soften natural light. Native planting blends the architecture with the shoreline's ecosystem, while the landmark's form ensures privacy and a sense of calm. Altogether, the composition harmonises luxury with nature, projecting quiet confidence and timeless poise along Al Marjan Island.



378  
Total Units



394,852.5 sqft  
Gross Floor area



157,941 sqft  
Plot Area



*Tomino Lamborghini*





TONINO LAMBORGHINI RESIDENCES STREET VISTA



AERIAL VIEW



POOL



## BOLDNESS, WELLBEING, ISLAND SERENITY

Boldness and wellness are intentionally woven into daily life: a modern gymnasium supports rigorous training and precise performance; a sauna and an outdoor pool restore circulation and quiet the senses; and a dedicated yoga area invites mindful breath, balance and length. The sequence moves deliberately from exertion to release, from heat to hush, creating a restorative cadence that settles the body and focuses the mind. Equipment is contemporary, spaces are softly lit, and the atmosphere remains serene. Composed for discipline, recovery, and lasting clarity. It feels private, purposeful, beautifully composed throughout.



## REFINED ARRIVAL **EXPERIENCE**

The entrance is intentionally refined and modern, aligning with the development's residential character. A clear approach leads to an access-controlled threshold that prioritises resident privacy, establishing a calm sense of security from the first step to the lobby. Landscaped realms soften edges and guide movement, creating a discreet transition from public space to private domain. Material expression remains quiet and refined, letting the island context take precedence while signalling a composed, confident arrival, from the street to sheltered threshold, gracefully with a play of lighting.



GRAND ENTRANCE



ENTRANCE LOBBY



ENTRANCE LOBBY



INDOOR SPA



## WELLNESS-CENTRED RESIDENTIAL LIVING

Every realm frames daily life with shade, texture, and a calm, restorative pace. Designed across villas and apartments, each space is composed to support wellness, leisure, and ease. Close connection to the shoreline introduces light, sea air, and open horizons into everyday routines. Sightlines are thoughtfully planned to maintain privacy while opening views toward gardens, pools, and wellness amenities. Residential and hospitality environments sit in harmony, creating a lifestyle defined by balance, comfort, and refined relaxation. Every setting encourages wellness that feels natural, intentional, and deeply ingrained.





GYM AREA



GYM AREA



KIDS AREA

## ITALIAN ATTITUDE MADE FOR LIVING

Interiors are conceived as an extension of Tonino Lamborghini's design language - bold, refined, and quietly elegant. Clean architectural lines frame generous volumes, allowing light to move freely across textured surfaces and tailored finishes from the brand Total Living collections. A restrained palette of warm neutrals and subtle metallic accents establishes continuity with the coastal setting while maintaining an unmistakable style. Every element is deliberate: from calibrated proportions to tactile details that invite touch. The result is a living environment that feels composed yet expressive, where craftsmanship, comfort, and clarity coexist effortlessly.



MANSSION LIVING ROOM



MANSSION DINING ROOM



FAMILY ROOM



MASTER BEDROOM



MASTER BATHROOM



MASTER BEDROOM



MASTER BEDROOM



VILLA LIVING ROOM



VILLA LIVING ROOM



MASTER BEDROOM



BATHROOM



OFFICE



BATHROOM



PENTHOUSE LIVING ROOM



## SHAPED FOR A RICHER ROUTINE

Each residence is planned to support modern living rhythms with ease and intention. Living, dining, and private zones flow naturally, balancing openness with moments of retreat. Bedrooms feel cocooned and calm, while other living spaces are efficient, elegant, and intuitively arranged for daily rituals and hosting alike. Acoustic comfort, soft lighting, and considered material transitions create an atmosphere of quiet focus throughout. These interiors do not seek attention; they reward presence. Thoughtfully resolved, they frame everyday life with dignity, calm, and a sense of lasting belonging.





PENTHOUSE MASTER BATHROOM



PENTHOUSE BEDROOM



BOLD DESIGN

**SOFTENED BY NATURAL TEXTURES**







**05 Minutes**  
Al Marjan Island Boulevard



**05 Minutes**  
Rixos Bab-al-Bahr Resort



**08 Minutes**  
Wynn Resort



**10 Minutes**  
Al Hamra Mall



**10 Minutes**  
RAK Central



**13 Minutes**  
Al Hamra Golf Club



**13 Minutes**  
Al Hamra Village



**16 Minutes**  
Cosmo Health Center



**16 Minutes**  
Dreamland Aqua Park



**18 Minutes**  
RAK Exhibition Centre



**20 Minutes**  
RAK Academy



**20 Minutes**  
Royal Yacht Club, RAK



*Tonino Lamborghini*

RESIDENCES  
RAS AL KHAIMAH



WYNN  
RESORT

AL MARJAN  
ISLAND



**34 Minutes**  
RAK Airport



**56 Minutes**  
Dubai International Airport



**90 Minutes**  
Al Maktoum International Airport



TONINO LAMBORGHINI RESIDENCES WATERFRONT VIEW



# THE AMENITIES



Swimming Pool



Yoga area



Kids Pool



Children's recreational area



Kids play area



Outdoor cinema



Parents' lounge



BBQ area



Gymnasium



Zen garden



Sauna



Pool Bar

# UNIT PLANS

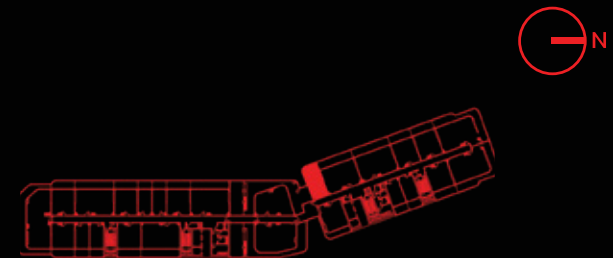


## STUDIO

### ST-1

1	Pantry	2.20X2.50m
2	Studio	5.55X4.70m
3	Bathroom	1.80X2.20m
4	Balcony	2.40X4.85m

Suite Area	385.46 Sq.ft
Balcony Area	125.94 Sq.ft
<b>Total Area</b>	<b>511.39 Sq.ft</b>



Key plan : Fourth Floor



## STUDIO

### ST-2

1	Pantry	2.50X1.70m
2	Studio	5.55X4.00m
3	Bathroom	1.80X2.20m
4	Balcony	2.30X4.20m

Suite Area	328.08 Sqft	to	328.08 Sqft
Balcony Area	78.15 Sqft	to	640.45 Sqft
<b>Total Area</b>	<b>406.23 Sqft</b>	<b>to</b>	<b>968.54 Sqft</b>



Key plan : Fourth Floor



## STUDIO

### ST-3

1	Pantry	3.20X1.70m
2	Studio	5.60X4.00m
3	Bathroom	1.80X2.20m
4	Balcony	3.13X7.70m
5	Balcony	2.42X5.59m
6	Pool	3.61X7.43m

Suite Area	337.13 Sq.ft
Balcony Area	579.42 Sq.ft
<b>Total Area</b>	<b>916.55 Sq.ft</b>



Key plan : Fifteenth Floor



## 1 BEDROOM

### 1BR-1

1	Kitchen	2.50X2.80m
2	Living Room	3.35X3.68m
3	Dining	1.62X2.45m
4	Bedroom	3.40X4.70m
5	Bathroom	1.70X1.90 m
6	Dress	1.75X2.24m
7	Powder Room	1.50X1.55m
8	Laundry	1.00X0.75m
9	Balcony	7.45X1.67m

Suite Area	593.52 Sq.ft	to	597.07 Sq.ft
Balcony Area	149.94 Sq.ft	to	1316.96 Sq.ft
<b>Total Area</b>	<b>743.46 Sq.ft</b>	<b>to</b>	<b>1914.04 Sq.ft</b>



Key plan : Fourth Floor



# 1 BEDROOM

## 1BR-2

1	Kitchen	2.50X2.80m
2	Living Room	4.22X5.71m
3	Dining	1.62X2.45m
4	Bedroom	3.00X4.10m
5	Bathroom	1.70X1.90 m
6	Dress	1.50X1.00m
7	Powder Room	1.50X1.40m
8	Laundry	1.00X0.75m
9	Balcony	6.90X2.30m

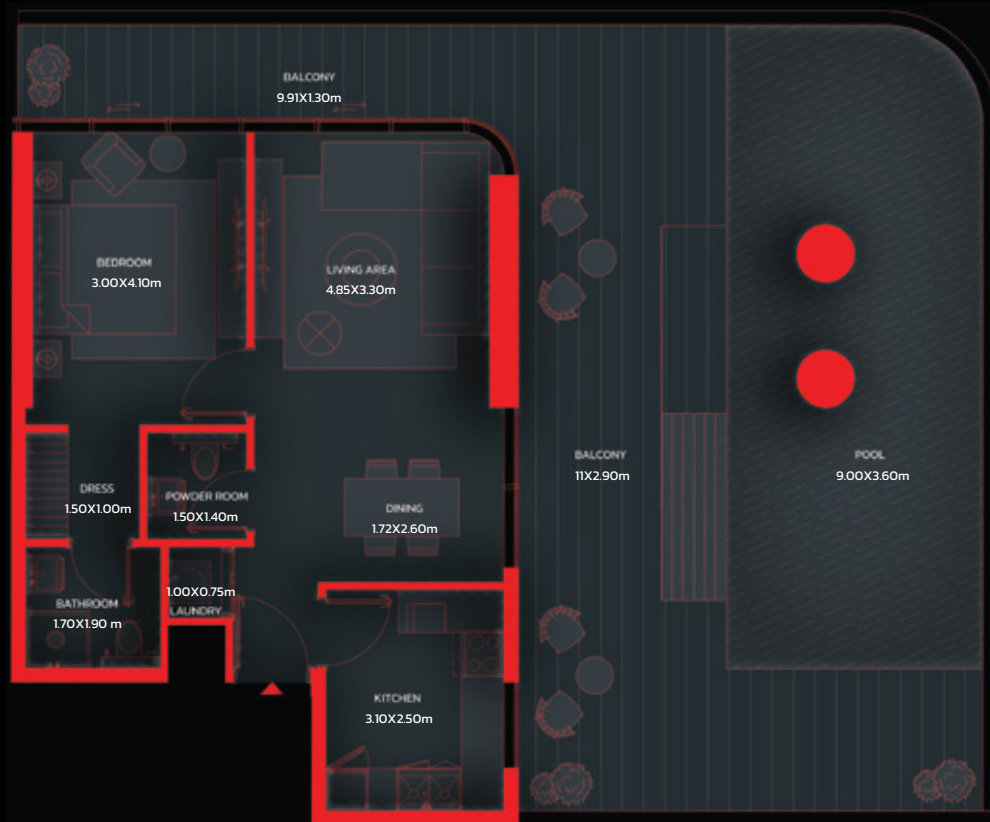
Suite Area	562.52 Sq.ft	to	550.57 Sq.ft
Balcony Area	106.78 Sq.ft	to	1293.82 Sq.ft
<b>Total Area</b>	<b>669.30 Sq.ft</b>	<b>to</b>	<b>1844.40 Sq.ft</b>



Key plan : Fourth Floor

# 1 BEDROOM

## 1BR-3



1	Kitchen	3.10X2.50m
2	Living Room	4.85X3.30m
3	Dining	1.72X2.60m
4	Bedroom	3.00X4.10m
5	Bathroom	1.70X1.90 m
6	Dress	1.50X1.00m
7	Powder Room	1.50X1.40m
8	Laundry	1.00X0.75m
9	Balcony	11X2.90m
10	Balcony	9.91X1.30m
11	Pool	9.00X3.60m

Suite Area	619.57 Sq.ft	to	619.57 Sq.ft
Balcony Area	380.72 Sq.ft	to	991.68 Sq.ft
<b>Total Area</b>	<b>1000.29 Sq.ft</b>	<b>to</b>	<b>1611.25 Sq.ft</b>



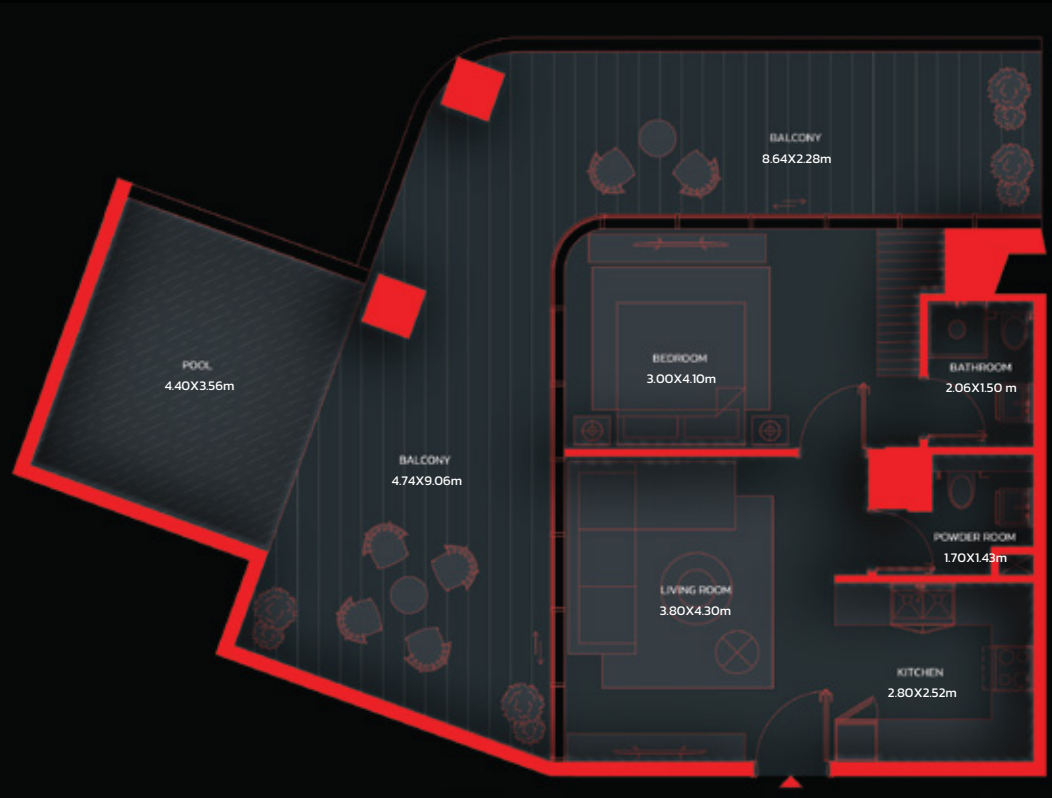
Key plan : Fifth Floor

# 1 BEDROOM

## 1BR-4

1	Kitchen	2.80X2.52m
2	Living Room	3.80X4.30m
3	Powder Room	1.70X1.43m
4	Bedroom	3.00X4.10m
5	Bathroom	2.06X1.50 m
6	Balcony	4.74X9.06m
7	Balcony	8.64X2.28m
8	Pool	4.40X3.56m

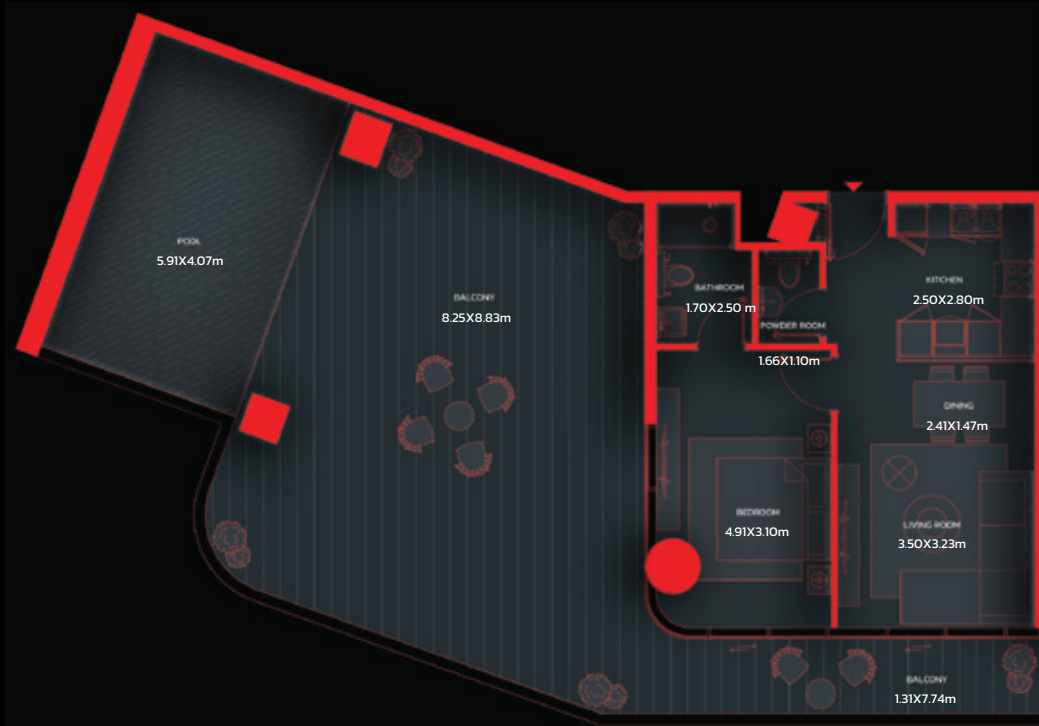
Suite Area	549.71 Sq.ft	to	550.04 Sq.ft
Balcony Area	656.17 Sq.ft	to	664.89 Sq.ft
<b>Total Area</b>	<b>1205.88 Sq.ft</b>	<b>to</b>	<b>1214.92 Sq.ft</b>



Key plan : Fifth Floor

# 1 BEDROOM

## 1BR-5



1	Kitchen	2.50X2.80m
2	Living Room	3.50X3.23m
3	Dining	2.41X1.47m
4	Bedroom	4.91X3.10m
5	Bathroom	1.70X2.50 m
6	Powder Room	1.66X1.10m
7	Balcony	8.25X8.83m
8	Balcony	1.31X7.74m
9	Pool	5.91X4.07m

Suite Area	562.41 Sq.ft	to	562.41 Sq.ft
Balcony Area	1019.45 Sq.ft	to	1019.99 Sq.ft
<b>Total Area</b>	<b>1581.86 Sq.ft</b>	<b>to</b>	<b>1582.40 Sq.ft</b>



Key plan : Fifth Floor



## 1 BEDROOM

### 1BR-6

1	Kitchen	2.50X2.80m
2	Living Room	3.50X3.23m
3	Dining	2.41X1.47m
4	Bedroom	5.00X3.10m
5	Bathroom	1.50X2.29 m
6	Powder Room	1.54X1.30m
7	Balcony	2.31X6.89m

Suite Area	556.17 Sq.ft	to	556.39 Sq.ft
Balcony Area	180.30 Sq.ft	to	181.59 Sq.ft
<b>Total Area</b>	<b>736.47 Sq.ft</b>	<b>to</b>	<b>737.97 Sq.ft</b>



Key plan : Fifth Floor

# 1 BEDROOM

## 1BR-7



1	Kitchen	2.50X2.80m
2	Living Room	3.30X3.17m
3	Dining	2.50X1.34m
4	Bedroom	4.10X3.00m
5	Bathroom	1.70X1.90m
6	Dress	1.00X1.85m
7	Powder Room	1.50X1.40m
8	Laundry	1.00X0.75m
9	Balcony	2.91X9.01m
10	Balcony	1.30X9.91m
11	Pool	9.01X3.58m

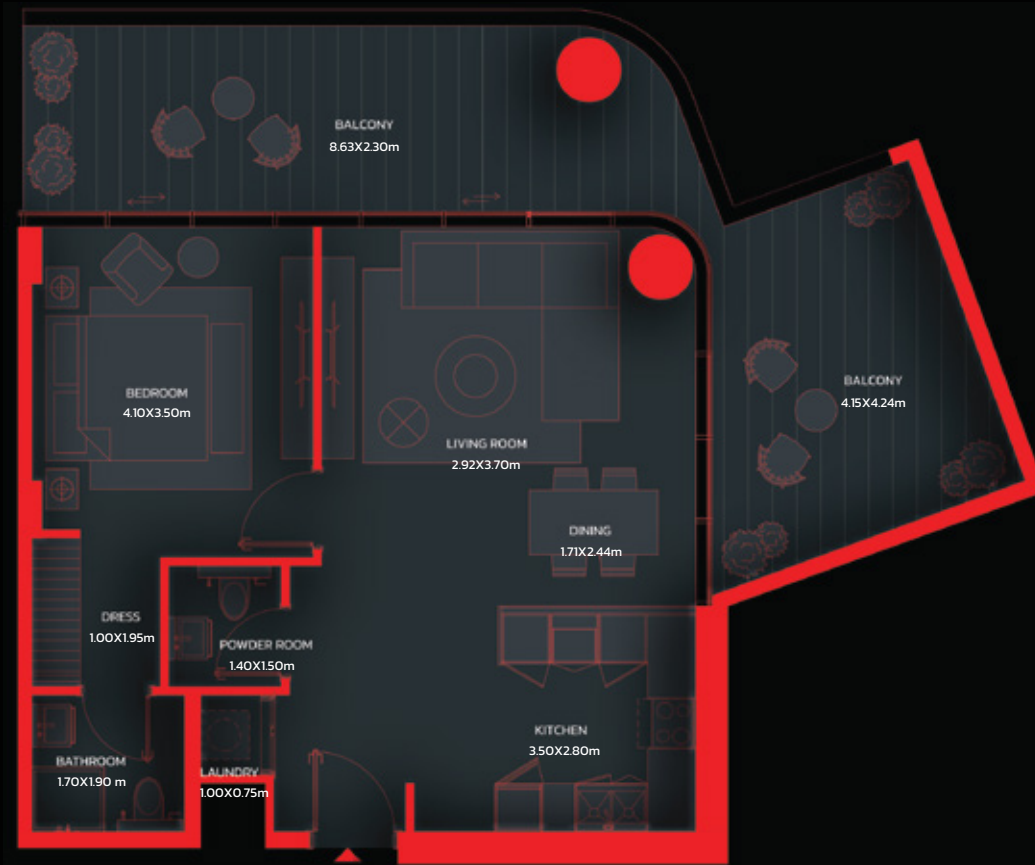
Suite Area	560.37 Sq.ft	to	560.37 Sq.ft
Balcony Area	333.57 Sq.ft	to	847.66 Sq.ft
<b>Total Area</b>	<b>893.94 Sq.ft</b>	<b>to</b>	<b>1408.03 Sq.ft</b>



Key plan : Fifth Floor

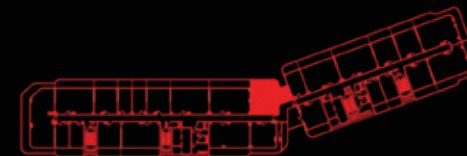
# 1 BEDROOM

## 1BR-8



1	Kitchen	3.50X2.80m
2	Living Room	2.92X3.70m
3	Dining	1.71X2.44m
4	Bedroom	4.10X3.50m
5	Bathroom	1.70X1.90 m
6	Dress	1.00X1.95m
7	Powder Room	1.40X1.50m
8	Laundry	1.00X0.75m
9	Balcony	8.63X2.30m
10	Balcony	4.15X4.24m

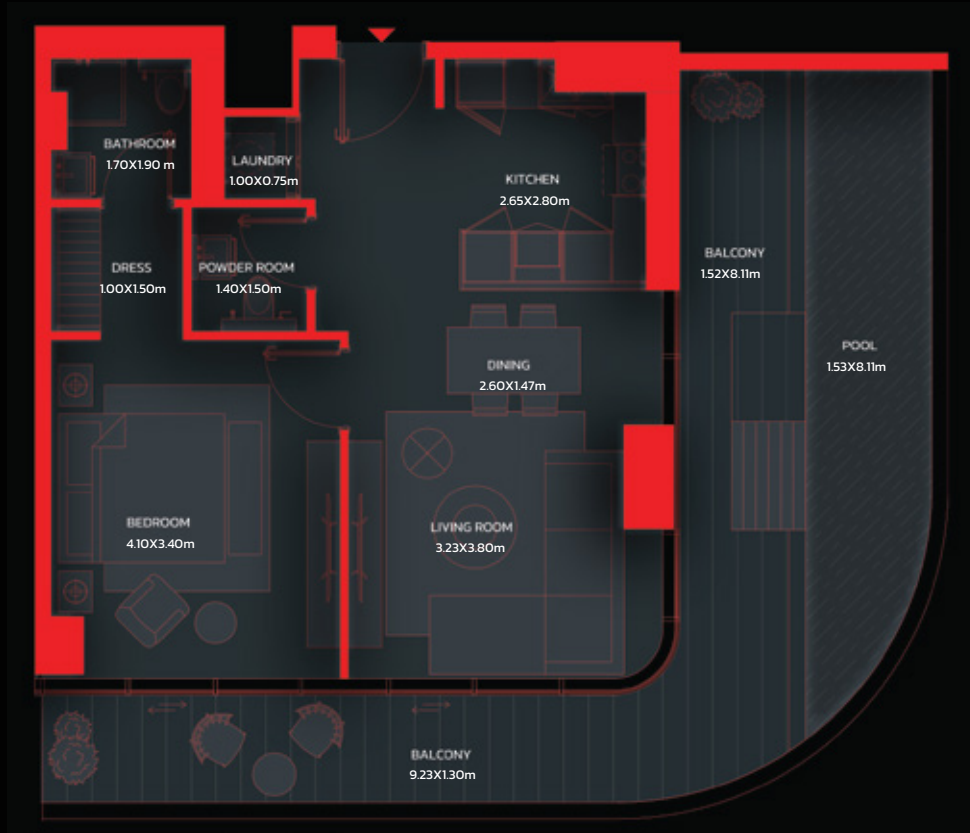
Suite Area	688.78 Sq.ft	to	685.23 Sq.ft
Balcony Area	379.21 Sq.ft	to	668.22 Sq.ft
<b>Total Area</b>	<b>1068.00 Sq.ft</b>	<b>to</b>	<b>1353.45 Sq.ft</b>



Key plan : Eighth Floor

# 1 BEDROOM

## 1BR-9



1	Kitchen	2.65X2.80m
2	Living Room	3.23X3.80m
3	Dining	2.60X1.47m
4	Bedroom	4.10X3.40m
5	Bathroom	1.70X1.90 m
6	Dress	1.00X1.50m
7	Powder Room	1.40X1.50m
8	Laundry	1.00X0.75m
9	Balcony	9.23X1.30m
10	Balcony	15.2X8.11m
11	Pool	15.3X8.11m

Suite Area	611.50 Sq.ft	to	604.29 Sq.ft
Balcony Area	398.26 Sq.ft	to	893.73 Sq.ft
<b>Total Area</b>	<b>1009.76 Sq.ft</b>	<b>to</b>	<b>1498.01 Sq.ft</b>



Key plan : Eighth Floor



# 1 BEDROOM

## 1BR-10

1	Kitchen	2.50X2.80m
2	Living Room	3.70X3.18m
3	Dining	1.50X2.45m
4	Bedroom	4.40X3.00m
5	Bathroom	2.00X1.70m
6	Dress	2.00X2.60m
7	Powder Room	1.20X1.50m
8	Balcony	7.30X2.30m

Suite Area	594.60 Sq.ft	to	594.60 Sq.ft
Balcony Area	180.19 Sq.ft	to	190.41 Sq.ft
<b>Total Area</b>	<b>774.79 Sq.ft</b>	<b>to</b>	<b>785.01 Sq.ft</b>



Key plan : Fifth Floor

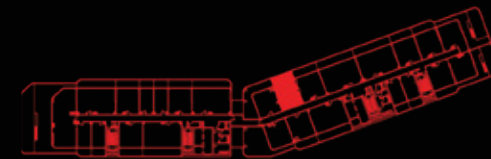


# 1 BEDROOM

1BR-11

1	Kitchen	2.50X2.80m
2	Living Room	4.70X3.18m
3	Bedroom	3.00X4.10m
4	Bathroom	1.70X2.50m
5	Dress	0.90X1.50m
6	Powder Room	1.40X1.40m
7	Balcony	6.62X2.30m

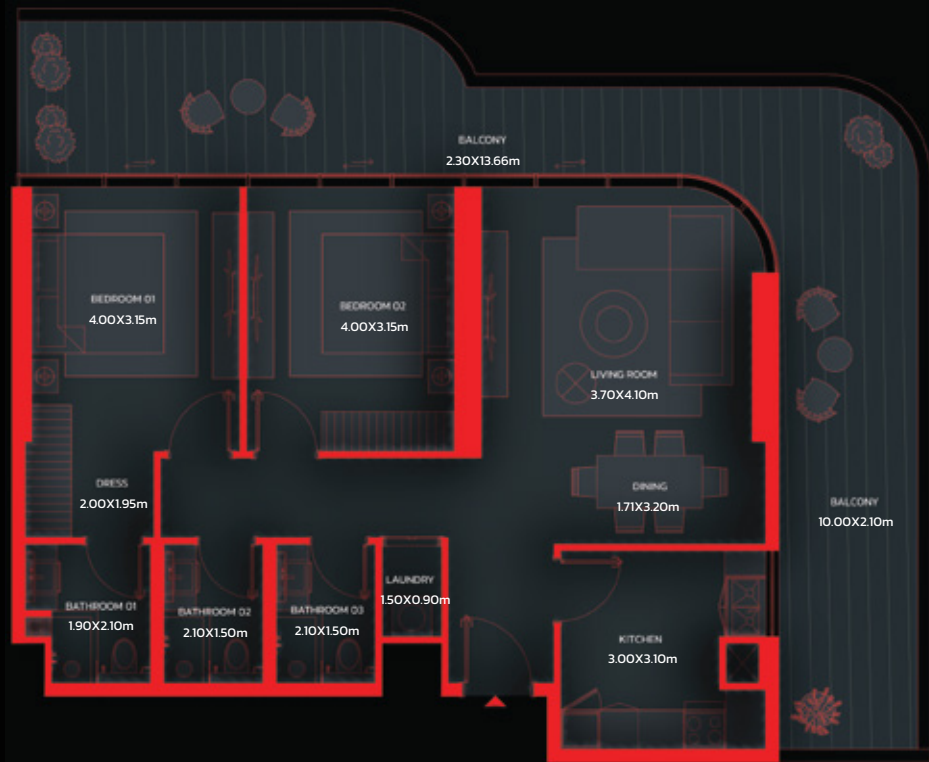
Suite Area	540.13 Sq.ft
Balcony Area	172.11 Sq.ft
<b>Total Area</b>	<b>712.25 Sq.ft</b>



Key plan : Fifth Floor

## 2 BEDROOM

### 2BR-1



1	Kitchen	3.00X3.10m
2	Living Room	3.70X4.10m
3	Dining	1.71X3.20m
4	Bedroom 01	4.00X3.15m
5	Bathroom 01	1.90X2.10m
6	Dress	2.00X1.95m
7	Bedroom 02	4.00X3.15m
8	Bathroom 02	2.10X1.50m
9	Bathroom 03	2.10X1.50m
10	Laundry	1.50X0.90m
11	Balcony	10.00X2.10m
12	Balcony	2.30X13.66m

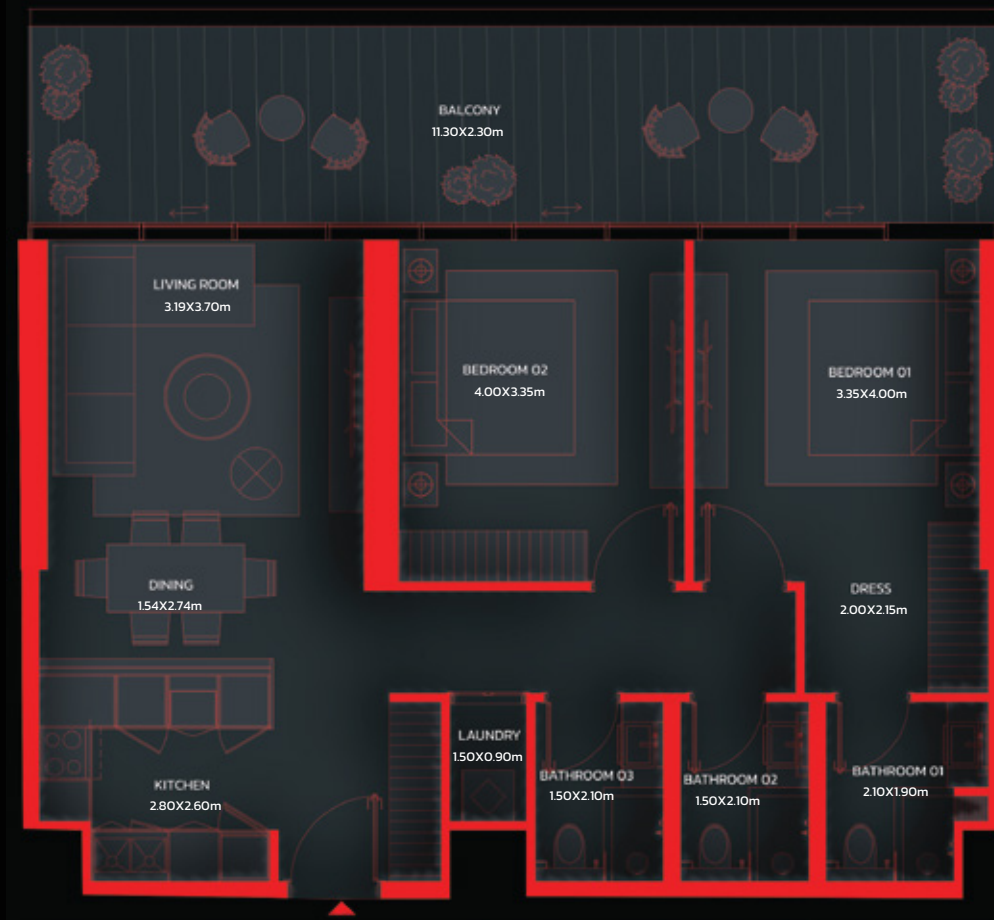
Suite Area	953.68 Sq.ft	to	952.18 Sq.ft
Balcony Area	432.28 Sq.ft	to	940.77 Sq.ft
<b>Total Area</b>	<b>1385.96 Sq.ft</b>	<b>to</b>	<b>1892.94 Sq.ft</b>



Key plan : Fourth Floor

## 2 BEDROOM

### 2BR-2



1	Kitchen	2.80X2.60m
2	Living Room	3.19X3.70m
3	Bedroom 01	3.35X4.00m
4	Bathroom 01	2.10X1.90m
5	Dress	2.00X2.15m
6	Bedroom 02	4.00X3.35m
7	Bathroom 02	1.50X2.10m
8	Bathroom 03	1.50X2.10m
9	Dining	1.54X2.74m
10	Laundry	1.50X0.90m
11	Balcony	11.30X2.30m

Suite Area	841.85 Sq.ft	to	846.90 Sq.ft
Balcony Area	273.51 Sq.ft	to	795.99 Sq.ft
<b>Total Area</b>	<b>1115.36 Sq.ft</b>	<b>to</b>	<b>1642.90 Sq.ft</b>



Key plan : Fourth Floor



## 2 BEDROOM

### 2BR-3

1	Kitchen	2.80X2.72m
2	Living Room	4.22X5.71m
3	Bedroom 01	3.80X3.72m
4	Bathroom 01	1.90X1.73m
5	Laundry	1.20X0.90m
6	Bedroom 02	4.41X3.90m
7	Bathroom 02	1.50X2.51m
8	Dining	3.13X4.69m
9	Balcony	3.12X10.00m
10	Balcony	3.00X8.60m
11	Balcony	120m wide
12	Pool	4.06X10.00m

Suite Area	1078.97 Sq.ft	to	1078.97 Sq.ft
Balcony Area	1259.70 Sq.ft	to	1738.05 Sq.ft
<b>Total Area</b>	<b>2338.67 Sq.ft</b>	<b>to</b>	<b>2817.02 Sq.ft</b>



Key plan : Fourth Floor



## 2 BEDROOM

### 2BR-4

1	Kitchen	2.80X2.65m
2	Living Room	3.38X3.95m
3	Bedroom O1	4.35X4.84m
4	Bathroom O1	1.96X1.50m
5	Dress	1.45X1.96m
6	Bedroom O2	3.64X4.19m
7	Bathroom O2	1.96X2.34m
8	Powder Room	2.34X1.10m
9	Balcony	3.12X10.00m
10	Balcony	3.86X15.75m
11	Balcony	6.19X10.15m
12	Pool	3.96X10.00m

Suite Area	854.76 Sq.ft	to	855.30 Sq.ft
Balcony Area	1399.74 Sq.ft	to	1519.86 Sq.ft
<b>Total Area</b>	<b>2254.50 Sq.ft</b>	<b>to</b>	<b>2375.16 Sq.ft</b>



Key plan : Fourth Floor



## 2 BEDROOM

2BR-5

1	Kitchen	3.40X3.74m
2	Living Room	4.00X5.92m
3	Dining	2.45X3.05m
4	Bedroom 01	4.00X3.45m
5	Bathroom 01	1.95X1.91m
6	Bedroom 02	3.50X4.20m
7	Bathroom 02	1.70X2.15m
8	Powder Room	1.30X1.85m
9	Balcony	2.30X16.50m
10	Balcony	5.86X4.65m

Suite Area	1118.37 Sq.ft
Balcony Area	732.81 Sq.ft
<b>Total Area</b>	<b>1851.18 Sq.ft</b>



Key plan : Fifteenth Floor



## 3 BEDROOM

### 3BR-1

1	Kitchen	3.75X4.90m
2	Living Room	4.90X6.70m
3	Dining	3.10X3.87m
4	Bedroom 01	4.50X3.90m
5	Bathroom 01	2.40X2.70m
6	Laundry	1.40X0.90m
7	Bedroom 02	4.50X4.10m
8	Bathroom 02	2.20X2.15m
9	Powder Room	1.80X1.80m
10	Balcony	19.05X2.30m
11	Balcony	6.62X1.30m
12	Balcony	9.38x1.30m
13	Bedroom 03	3.80X3.20m

Suite Area	1264.33 Sq.ft	to	1268.85 Sq.ft
Balcony Area	701.48 Sq.ft	to	2280.55 Sq.ft
<b>Total Area</b>	<b>1965.81 Sq.ft</b>	<b>to</b>	<b>3549.40 Sq.ft</b>



Key plan : Fourth Floor



## 3 BEDROOM

### 3BR-2

1	Kitchen	3.90X3.00m
2	Living Room	5.45X3.75m
3	Dining	4.50X3.95m
4	Master Bedroom	4.70X3.15m
5	Master Bathroom	2.71X1.95m
6	Powder Room	1.95X1.30m
7	Bedroom 01	3.30X4.20m
8	Bathroom 01	1.70X1.95m
9	Bedroom 02	3.35X4.20m
10	Bathroom 02	1.70X1.95m
11	Balcony	2.30X19.21m

Suite Area	1546.45 Sq.ft
Balcony Area	495.89 Sq.ft
<b>Total Area</b>	<b>2042.34 Sq.ft</b>



Key plan : Fifteenth Floor

## 3 BEDROOM

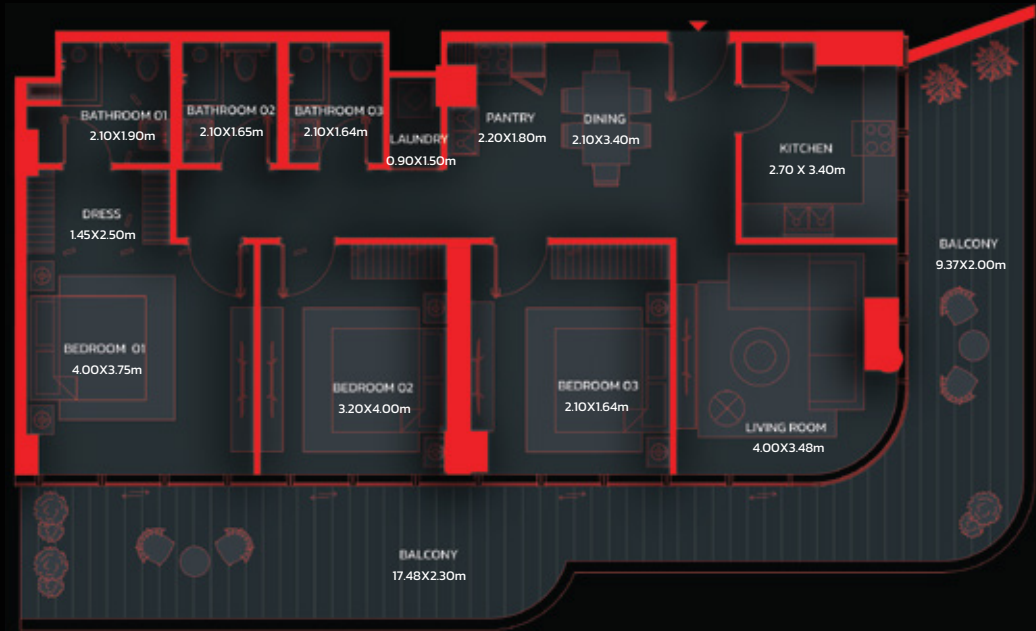
### 3BR-6

1	Pantry	2.20X1.80m
2	Living Room	4.00X3.48m
3	Dining	2.10X3.40m
4	Bedroom 01	4.00X3.75m
5	Bathroom 01	2.10X1.90m
6	Dress	1.45X2.50m
7	Bedroom 02	3.20X4.00m
8	Bathroom 02	2.10X1.65m
9	Bedroom 03	2.10X1.64m
10	Bathroom 03	2.10X1.64m
11	Laundry	0.90X1.50m
12	Balcony	9.37X2.00m
13	Balcony	17.48X2.30m
14	Kitchen	2.70 X 3.40m

Suite Area	1236.02 Sq.ft
Balcony Area	553.37 Sq.ft
<b>Total Area</b>	<b>1789.39 Sq.ft</b>

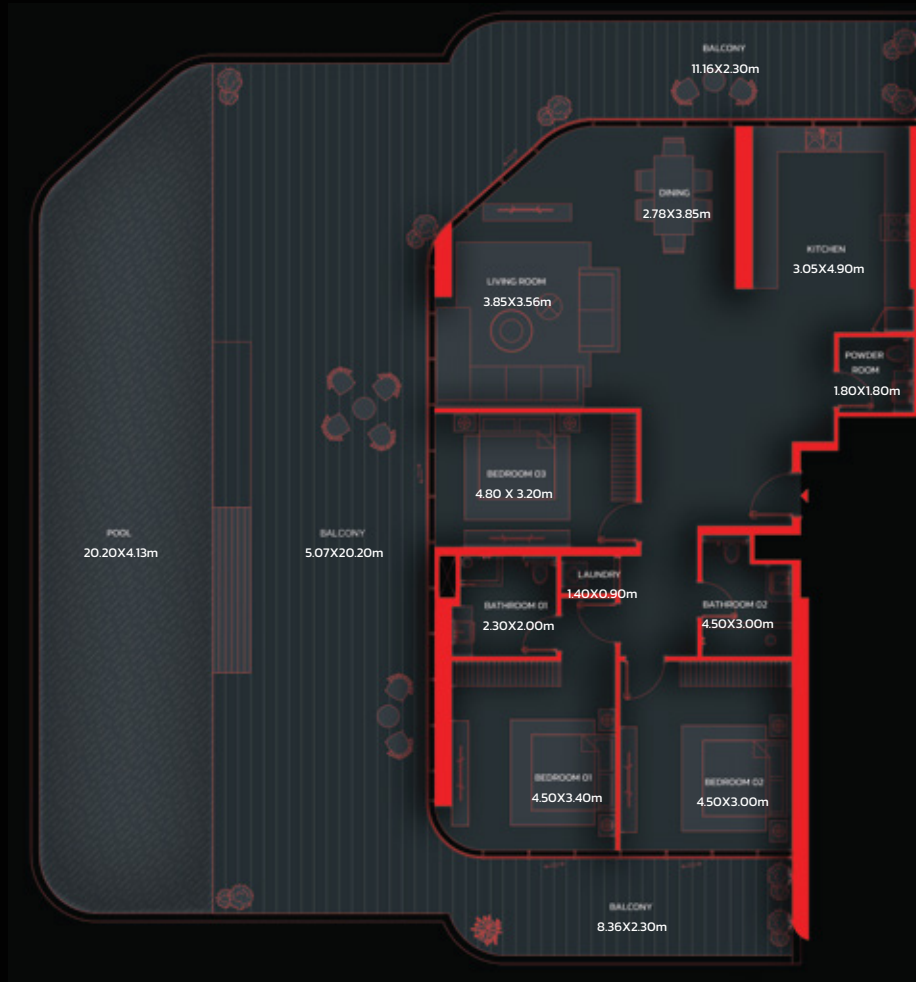


Key plan : Fifteenth Floor



## 3 BEDROOM-PENTHOUSE

### 3BR-PENTHOUSE 1



1	Kitchen	3.05X4.90m
2	Living Room	3.85X3.56m
3	Dining	2.78X3.85m
4	Bedroom 01	4.50X3.40m
5	Bathroom 01	2.30X2.00m
6	Laundry	1.40X0.90m
7	Bedroom 02	4.50X3.00m
8	Bathroom 02	1.80X2.20m
9	Powder Room	1.80X1.80m
10	Balcony	5.07X20.20m
11	Balcony	11.16X2.30m
12	Balcony	8.36X2.30m
13	Pool	20.20X4.13m
14	Bedroom 03	4.80 X 3.20m
Suite Area		1770.56 Sq.ft to 1770.66 Sq.ft
Balcony Area		869.29 Sq.ft to 2579.79 Sq.ft
<b>Total Area</b>		<b>2639.85 Sq.ft to 4350.45 Sq.ft</b>



Key plan : Ninth Floor

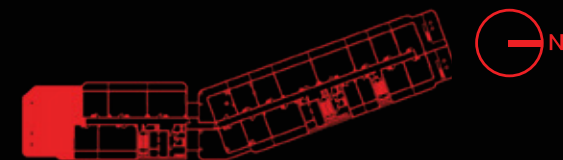


### 3 BEDROOM-PENTHOUSE

#### 3BR-PENTHOUSE 2

1	Kitchen	3.10X5.00m
2	Living Room	3.85X3.75m
3	Dining	2.08X3.90m
4	Laundry	0.90X1.20m
5	Powder Room	1.80X1.90m
6	Bedroom 01	3.10X4.50m
7	Bathroom 01	2.40X1.90m
8	Bedroom 02	3.20X4.50m
9	Bathroom 02	1.70X2.20m
10	Bedroom 03	3.80X3.20m
11	Balcony	20.20X3.42m
12	Balcony	1.30X1.12m
13	Balcony	10.72X2.30m
14	Pool	20.20X4.13m

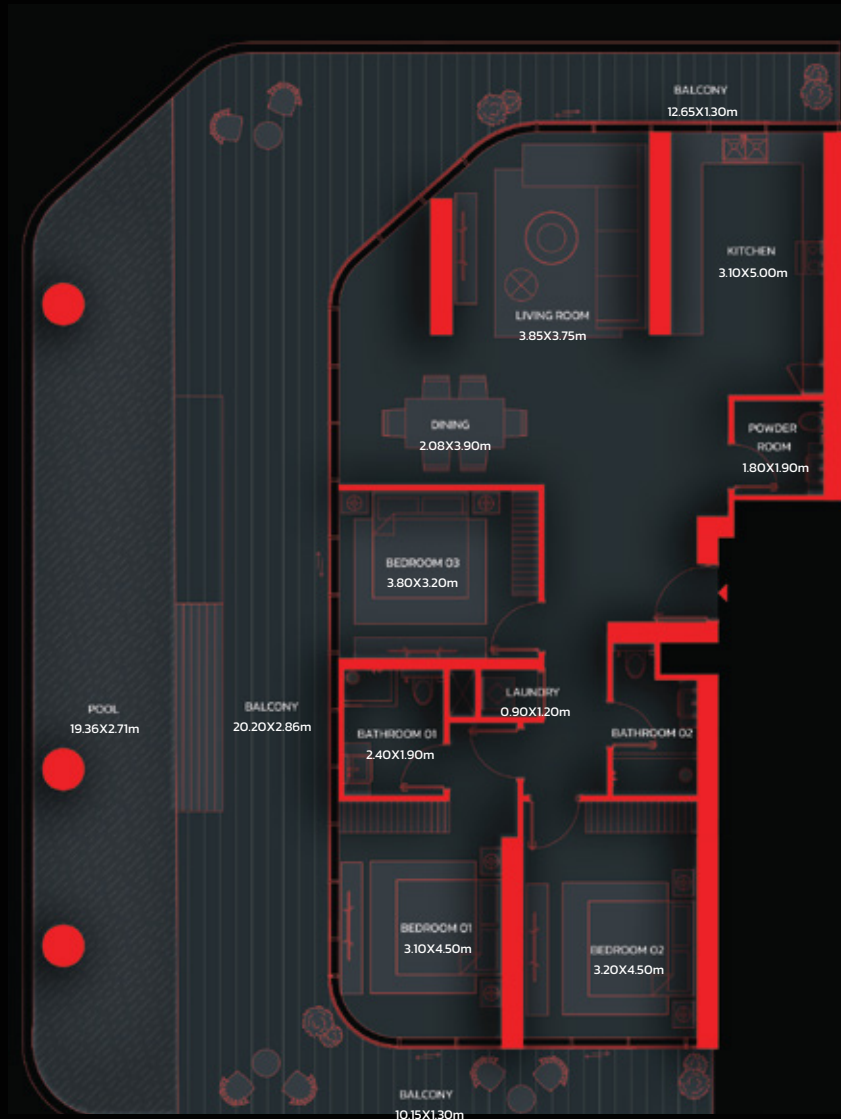
Suite Area	1541.07 Sq.ft	to	1541.07 Sq.ft
Balcony Area	1564.21 Sq.ft	to	1992.29 Sq.ft
<b>Total Area</b>	<b>3105.28 Sq.ft</b>	<b>to</b>	<b>3533.36 Sq.ft</b>



Key plan : Eleventh Floor

## 3 BEDROOM-PENTHOUSE

### 3BR-PENTHOUSE 3



1	Kitchen	3.10X5.00m
2	Living Room	3.85X3.75m
3	Dining	2.08X3.90m
4	Laundry	0.90X1.20m
5	Powder Room	1.80X1.90m
6	Bedroom 01	3.10X4.50m
7	Bathroom 01	2.40X1.90m
8	Bedroom 02	3.20X4.50m
9	Bathroom 02	1.70X2.20m
10	Bedroom 03	3.80X3.20m
11	Balcony	20.20X2.86m
12	Balcony	12.65X1.30m
13	Balcony	10.15X1.30m
14	Pool	19.36X2.71m

Suite Area	1471.75 Sq.ft	to	1471.96 Sq.ft
Balcony Area	1513.41 Sq.ft	to	1513.30 Sq.ft
<b>Total Area</b>	<b>2985.16 Sq.ft</b>	<b>to</b>	<b>2985.26 Sq.ft</b>



Key plan : Thirteenth Floor



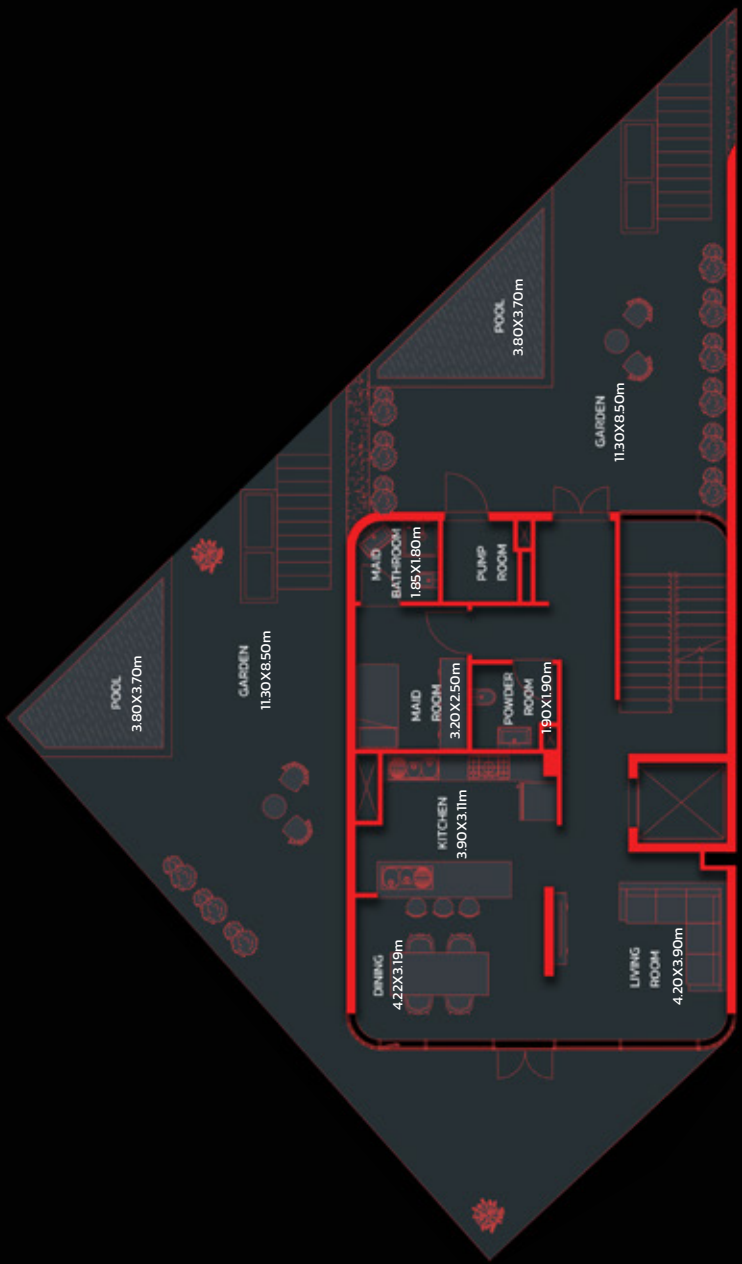
### 3 BEDROOM-PENTHOUSE 3BR-PENTHOUSE 4

1	Kitchen	3.20X3.30m
2	Living Room	6.98X5.70m
3	Dining	6.80X3.80m
4	Master Bedroom	4.95X5.50m
5	Master Bathroom	3.30X1.90m
6	Laundry / Store	2.30X3.40m
7	Bedroom 01	4.20X3.35m
8	Bathroom 01	1.70X1.95m
9	Powder Room	1.95X1.45m
10	Bedroom 02	4.00X3.15m
11	Bathroom 02	1.95X1.75m
12	Maid Room	2.50X3.60m
13	Maid Bathroom	2.00X1.50m
14	Balcony	20.20X14.15m
15	Balcony	12.06X2.30m
16	Balcony	11.71X2.30m
17	Pool	7.25X20.20m
Suite Area		2161.39 Sq.ft
Balcony Area		5136.32 Sq.ft
<b>Total Area</b>		<b>7297.72 Sq.ft</b>



Key plan : Fifteenth Floor

Disclaimer: All dimensions, materials and drawings are approximate. Information is subject to change without notice, at the developer's absolute discretion. The actual area may vary from the stated area. Drawings are not to scale. All images used are for illustrative purposes only and do not represent the actual size, features, specifications, fittings and furnishings. The developer reserves the right to make revisions/alterations, at the absolute discretion without any liability whatsoever.

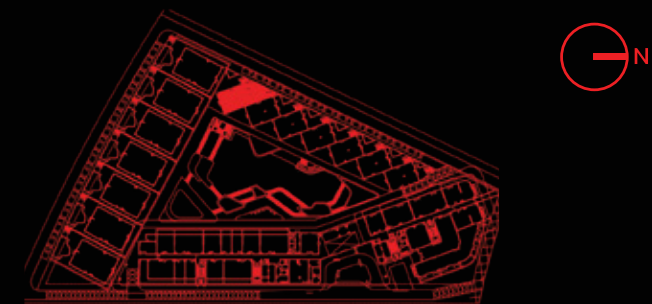


## VILLA 3 BEDROOM

### VILLA-GROUND FLOOR

1	Kitchen	3.90X3.11m
2	Living Room	4.20X3.90m
3	Dining	4.22X3.19m
4	Powder Room	1.90X1.90m
5	Maid Room	3.20X2.50m
6	Maid Bathroom	1.85X1.80m
7	Pump Room	1.80X1.67m
8	Pool	3.80X3.70m
9	Garden	11.30X8.50m

Suite Area	3063.19 Sq.ft	to	3063.51 Sq.ft
Balcony Area	1532.13 Sq.ft	to	2303.80 Sq.ft
<b>Total Area</b>	<b>4595.65 Sq.ft</b>	<b>to</b>	<b>5367.10 Sq.ft</b>



Key plan : Ground Floor

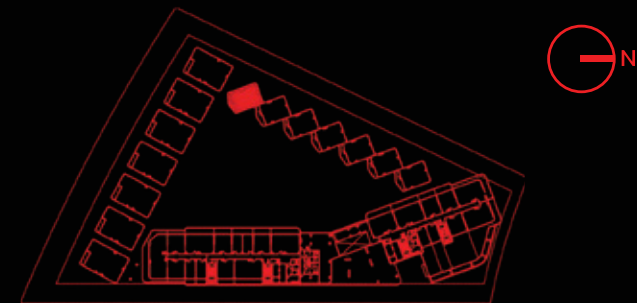


## VILLA 3 BEDROOM

### VILLA-FIRST FLOOR

1	Bedroom 01	5.10X4.50m
2	Bathroom 01	2.70X1.80m
3	Bedroom 02	5.00X3.90m
4	Bathroom 02	2.83X2.30m
5	Balcony	8.68X2.35m

Suite Area	3063.19 Sq.ft	to	3063.51 Sq.ft
Balcony Area	1532.13 Sq.ft	to	2303.80 Sq.ft
<b>Total Area</b>	<b>4595.65 Sq.ft</b>	<b>to</b>	<b>5367.10 Sq.ft</b>



Key plan : First Floor

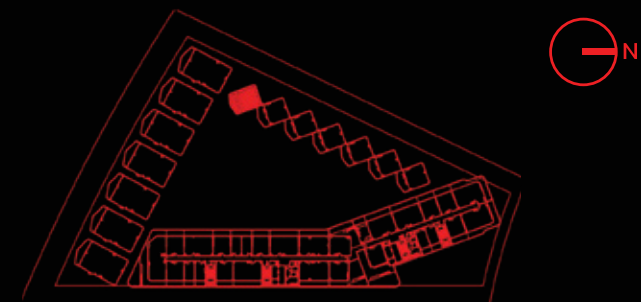


## VILLA 3 BEDROOM

### VILLA-SECOND FLOOR

1	Master Bedroom	5.10X4.20m
2	Master Bathroom	3.40X2.70m
3	Dress	2.70X2.30m
4	Balcony	8.66X3.68m

Suite Area	3063.19 Sq.ft	to	3063.51 Sq.ft
Balcony Area	1532.13 Sq.ft	to	2303.80 Sq.ft
<b>Total Area</b>	<b>4595.65 Sq.ft</b>	<b>to</b>	<b>5367.10 Sq.ft</b>



Key plan : Second Floor

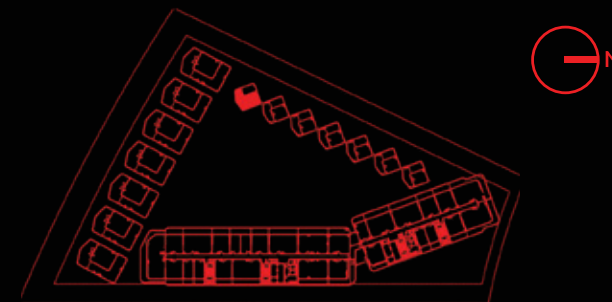
# VILLA 3 BEDROOM

## VILLA-THIRD FLOOR

1	Balcony	8.30X2.78m
---	---------	------------



Suite Area	3063.19 Sq.ft	to	3063.51 Sq.ft
Balcony Area	1532.13 Sq.ft	to	2303.80 Sq.ft
<b>Total Area</b>	<b>4595.65 Sq.ft</b>	<b>to</b>	<b>5367.10 Sq.ft</b>



Key plan : Third Floor

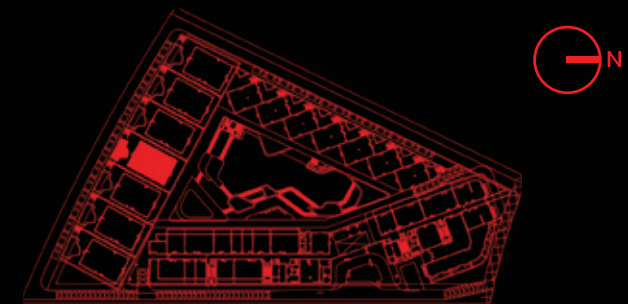


## MANSION 5 BEDROOM

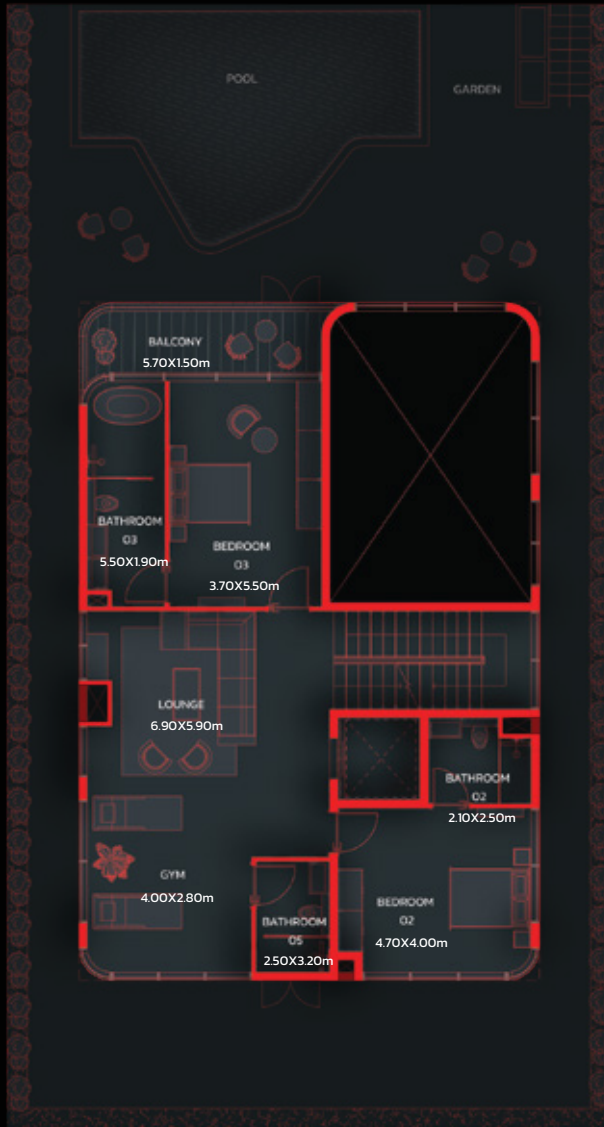
### MANSION-GROUND FLOOR

1	Kitchen	4.10X4.00m
2	Living Room	4.90X7.10m
3	Dining	5.50X3.40m
4	Bedroom 01	4.70X4.00m
5	Bathroom 01	2.10X2.50m
6	Powder Room	1.30X2.05m
7	Maid Room	2.50X3.20m
8	Maid Bathroom	2.50X1.50m
9	Laundry	1.40X1.40m
10	Store	1.40X2.00m
11	Pump Room	1.40X2.00m
12	Pool	8.29X5.66 m
13	Garden	13.70X7.16m

Suite Area	5994.85 Sq.ft	to	5994.85 Sq.ft
Balcony Area	3074.39 Sq.ft	to	3194.73 Sq.ft
<b>Total Area</b>	<b>9069.24 Sq.ft</b>	<b>to</b>	<b>9189.58 Sq.ft</b>



Key plan : Ground Floor

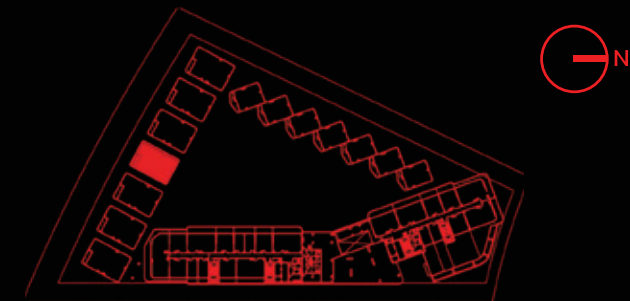


## MANSION 5 BEDROOM

### MANSION-FIRST FLOOR

1	Lounge O1	6.90X5.90m
2	Gym	4.00X2.80m
3	Bedroom O2	4.70X4.00m
4	Bathroom O2	2.10X2.50m
5	Bedroom O3	3.70X5.50m
6	Bathroom O3	5.50X1.90m
7	Bathroom O5	2.50X3.20m
8	Balcony	5.70X1.50m

Suite Area	5994.85 Sq.ft	to	5994.85 Sq.ft
Balcony Area	3074.39 Sq.ft	to	3194.73 Sq.ft
<b>Total Area</b>	<b>9069.23 Sq.ft</b>	<b>to</b>	<b>9189.57 Sq.ft</b>



Key plan : First Floor

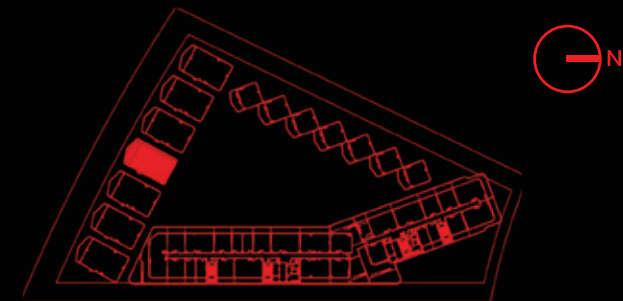


## MANSION 5 BEDROOM

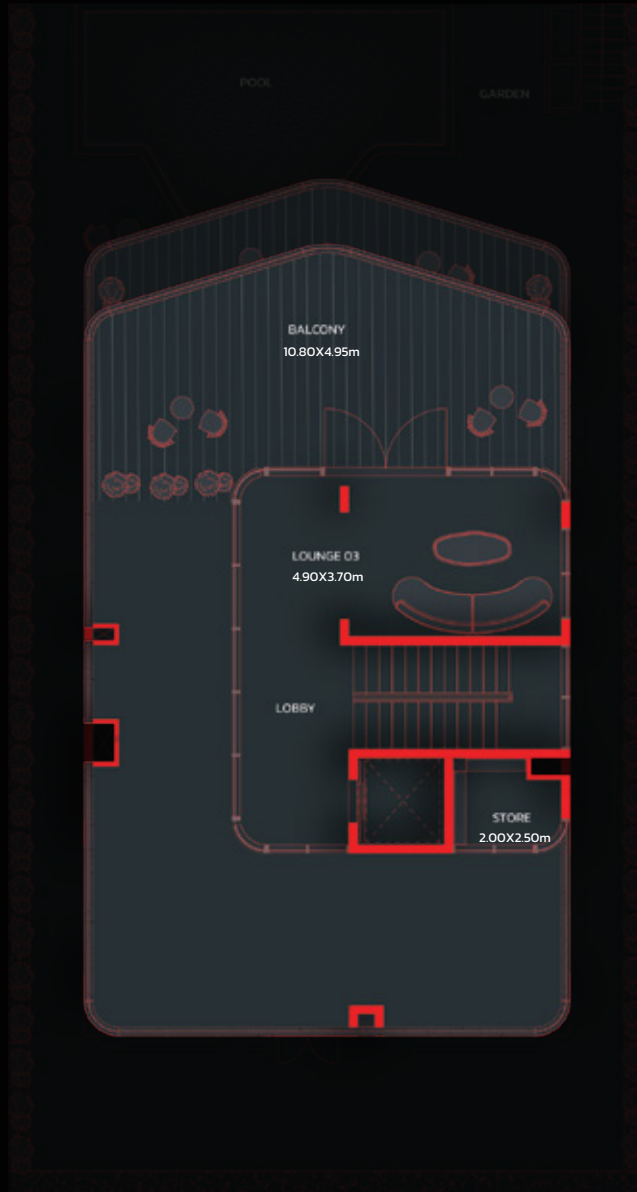
### MANSION-SECOND FLOOR

1	Lounge 02	8.80X5.90m
2	Bedroom 04	4.70X4.00m
3	Bathroom 04	2.10X2.50m
4	Bathroom 06	1.80X2.70m
5	Master Bedroom	7.10X4.30m
6	Master Bathroom	3.60X3.40m
7	Dress	3.70X3.70m
8	Study	2.60X3.95m
9	Balcony	3.05X10.40m

Suite Area	5994.85 Sq.ft	to	5994.85 Sq.ft
Balcony Area	3074.39 Sq.ft	to	3194.73 Sq.ft
<b>Total Area</b>	<b>9069.24 Sq.ft</b>	<b>to</b>	<b>9189.58 Sq.ft</b>



Key plan : Second Floor

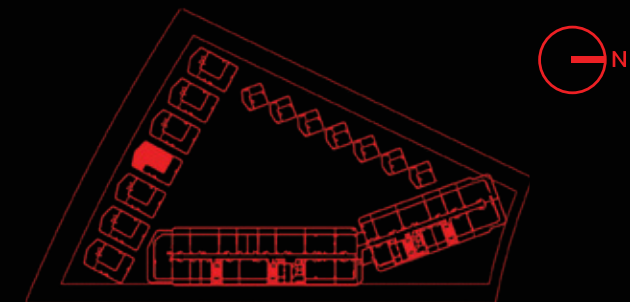


## MANSION 5 BEDROOM

### MANSION-THIRD FLOOR

1	Lounge 03	4.90X3.70m
2	Store	2.00X2.50m
3	Balcony	10.80X4.95m

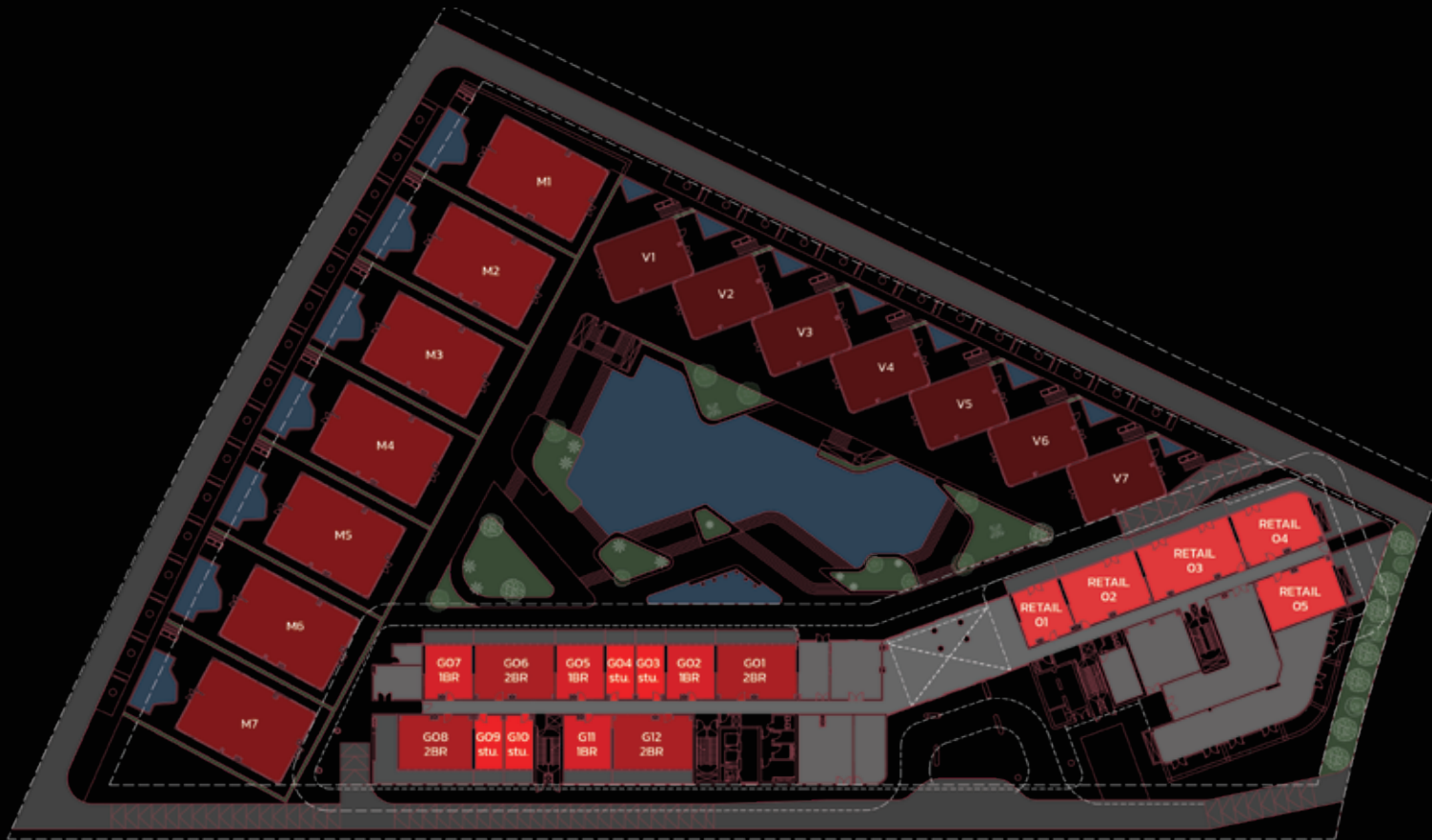
Suite Area	5994.85 Sq.ft	to	5994.85 Sq.ft
Balcony Area	3074.39 Sq.ft	to	3194.73 Sq.ft
<b>Total Area</b>	<b>9069.24 Sq.ft</b>	<b>to</b>	<b>9189.58 Sq.ft</b>



Key plan : Third Floor

# FLOOR PLANS

# GROUND FLOOR LAYOUT



● STUDIO

● 1 BHK

● 2 BHK

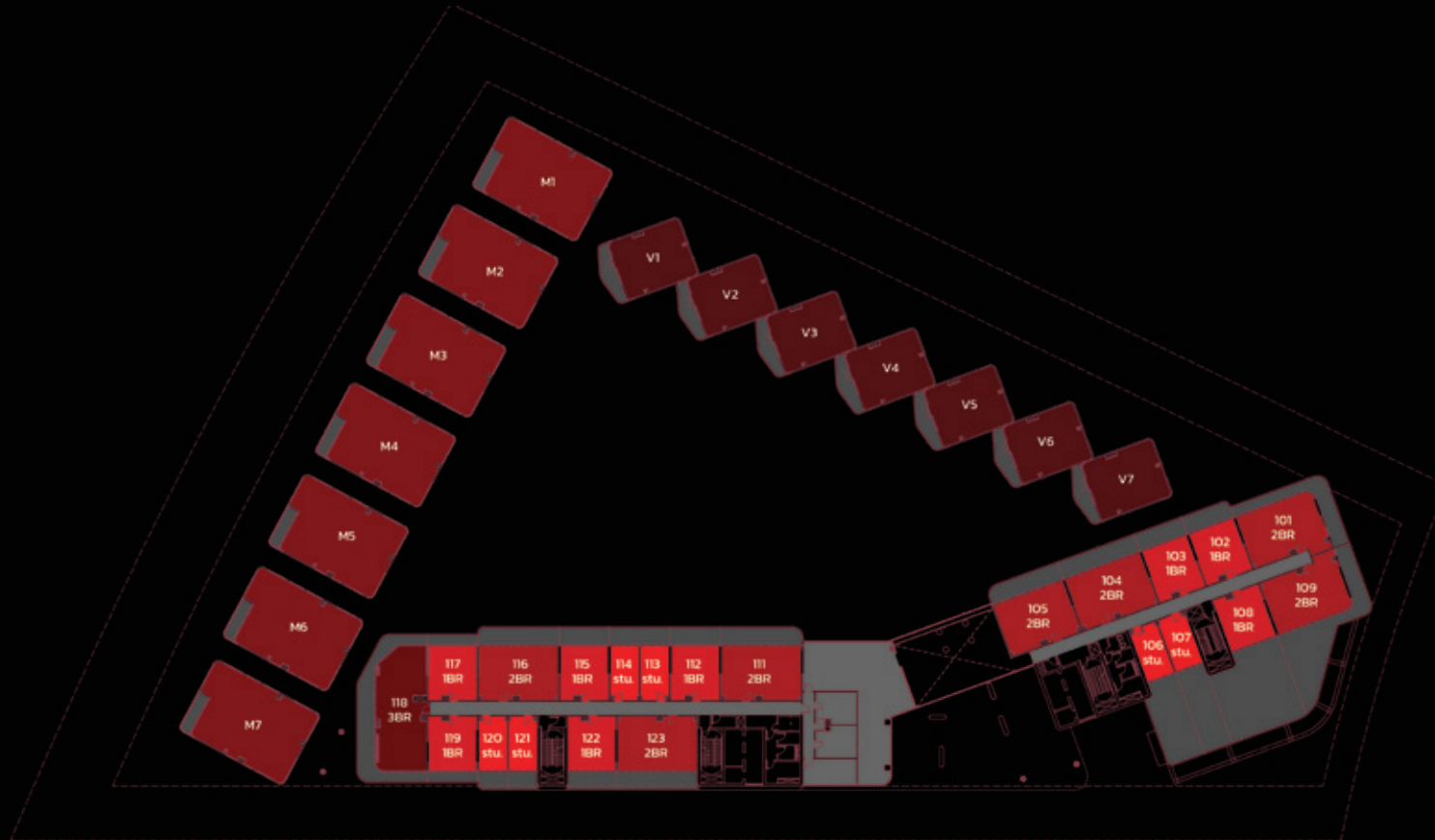
● 3 BHK

● MANSION

● VILLA

Disclaimer: All dimensions, materials and drawings are approximate. Information is subject to change without notice, at the developer's absolute discretion. The actual area may vary from the stated area. Drawings are not to scale. All images used are for illustrative purposes only and do not represent the actual size, features, specifications, fittings and furnishings. The developer reserves the right to make revisions/alterations, at the absolute discretion without any liability whatsoever.

# FIRST FLOOR LAYOUT



● STUDIO

● 1 BHK

● 2 BHK

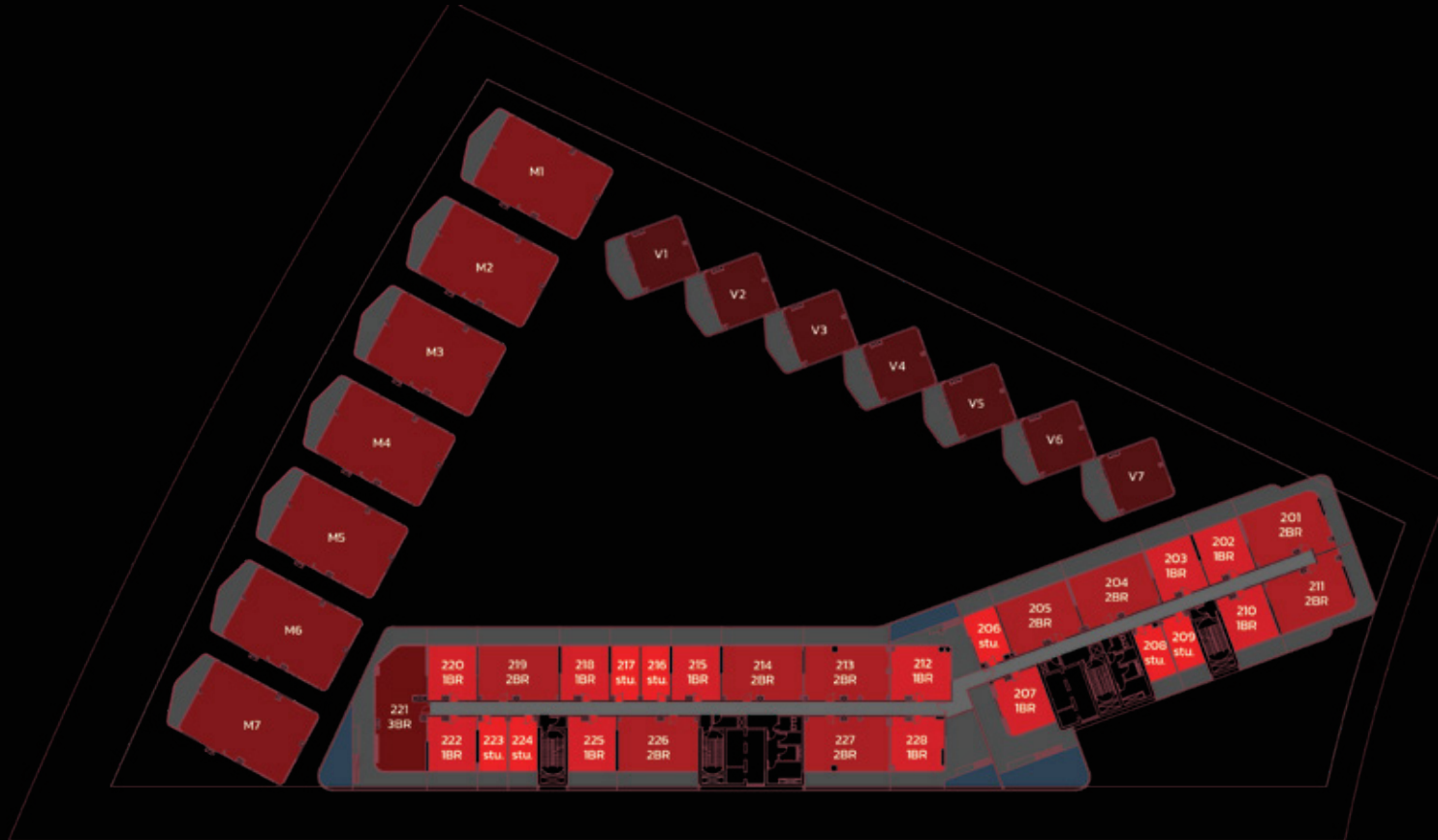
● 3 BHK

● MANSION

● VILLA

Disclaimer: All dimensions, materials and drawings are approximate. Information is subject to change without notice, at the developer's absolute discretion. The actual area may vary from the stated area. Drawings are not to scale. All images used are for illustrative purposes only and do not represent the actual size, features, specifications, fittings and furnishings. The developer reserves the right to make revisions/alterations, at the absolute discretion without any liability whatsoever.

# SECOND FLOOR LAYOUT



● STUDIO

● 1 BHK

● 2 BHK

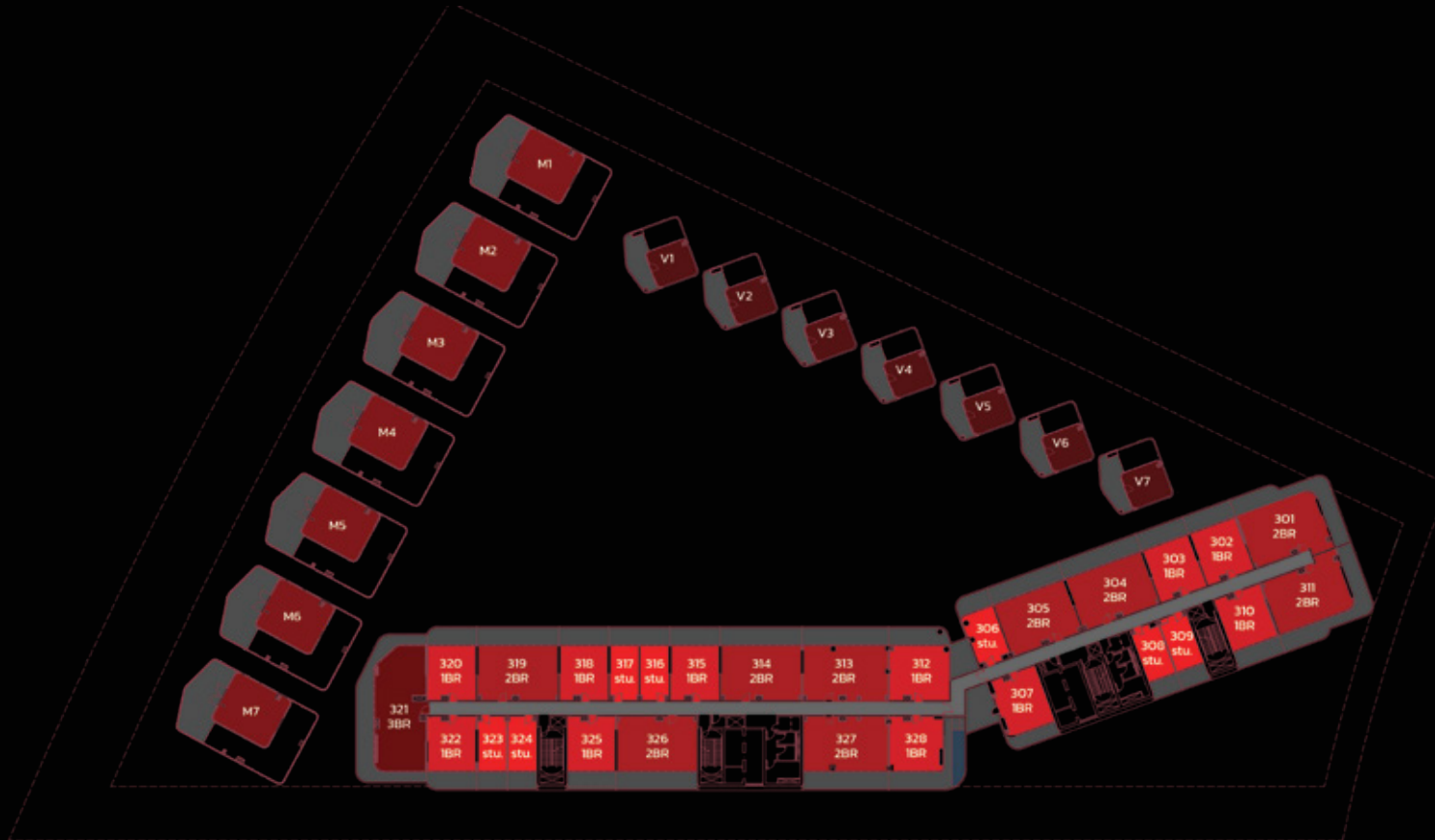
● 3 BHK

● MANSION

● VILLA

Disclaimer: All dimensions, materials and drawings are approximate. Information is subject to change without notice, at the developer's absolute discretion. The actual area may vary from the stated area. Drawings are not to scale. All images used are for illustrative purposes only and do not represent the actual size, features, specifications, fittings and furnishings. The developer reserves the right to make revisions/alterations, at the absolute discretion without any liability whatsoever.

# THIRD FLOOR LAYOUT



● STUDIO

● 1 BHK

● 2 BHK

● 3 BHK

● MANSION

● VILLA

Disclaimer: All dimensions, materials and drawings are approximate. Information is subject to change without notice, at the developer's absolute discretion. The actual area may vary from the stated area. Drawings are not to scale. All images used are for illustrative purposes only and do not represent the actual size, features, specifications, fittings and furnishings. The developer reserves the right to make revisions/alterations, at the absolute discretion without any liability whatsoever.

# FOURTH FLOOR LAYOUT



● STUDIO

● 1 BHK

● 2 BHK

● 3 BHK

Disclaimer: All dimensions, materials and drawings are approximate. Information is subject to change without notice, at the developer's absolute discretion. The actual area may vary from the stated area. Drawings are not to scale. All images used are for illustrative purposes only and do not represent the actual size, features, specifications, fittings and furnishings. The developer reserves the right to make revisions/alterations, at the absolute discretion without any liability whatsoever.

# FIFTH FLOOR LAYOUT



● STUDIO

● 1 BHK

● 2 BHK

● 3 BHK PENTHOUSE

Disclaimer: All dimensions, materials and drawings are approximate. Information is subject to change without notice, at the developer's absolute discretion. The actual area may vary from the stated area. Drawings are not to scale. All images used are for illustrative purposes only and do not represent the actual size, features, specifications, fittings and furnishings. The developer reserves the right to make revisions/alterations, at the absolute discretion without any liability whatsoever.

# SIXTH FLOOR LAYOUT



● STUDIO

● 1 BHK

● 2 BHK

● 3 BHK

Disclaimer: All dimensions, materials and drawings are approximate. Information is subject to change without notice, at the developer's absolute discretion. The actual area may vary from the stated area. Drawings are not to scale. All images used are for illustrative purposes only and do not represent the actual size, features, specifications, fittings and furnishings. The developer reserves the right to make revisions/alterations, at the absolute discretion without any liability whatsoever.

# SEVENTH FLOOR LAYOUT



● STUDIO

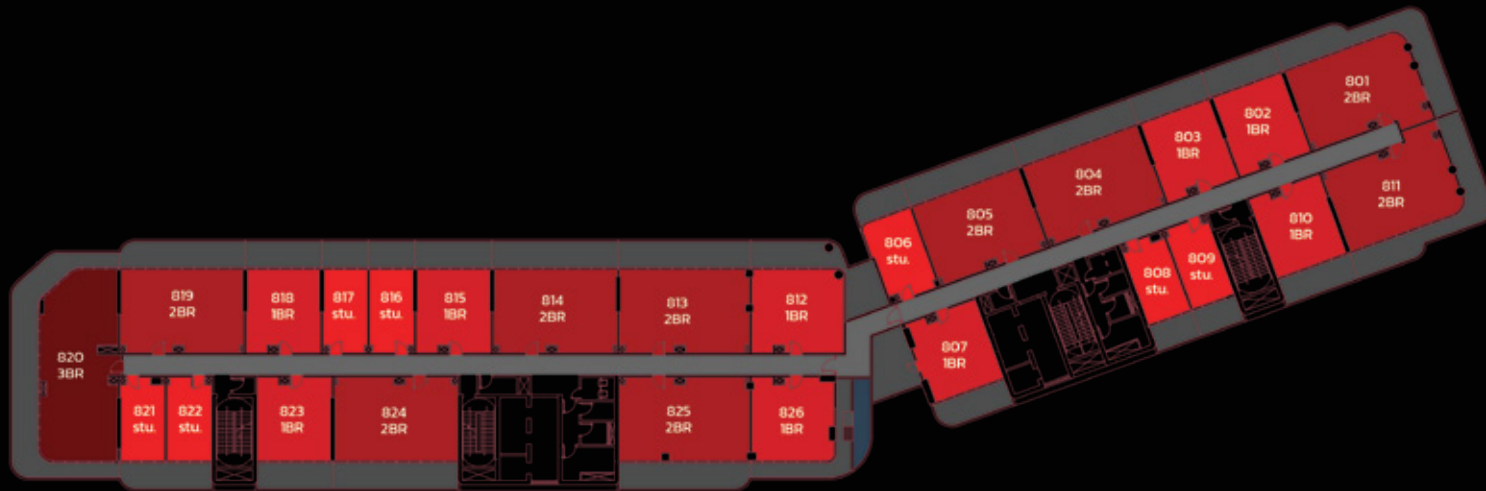
● 1 BHK

● 2 BHK

● 3 BHK

Disclaimer: All dimensions, materials and drawings are approximate. Information is subject to change without notice, at the developer's absolute discretion. The actual area may vary from the stated area. Drawings are not to scale. All images used are for illustrative purposes only and do not represent the actual size, features, specifications, fittings and furnishings. The developer reserves the right to make revisions/alterations, at the absolute discretion without any liability whatsoever.

# EIGHTH FLOOR LAYOUT



● STUDIO

● 1 BHK

● 2 BHK

● 3 BHK

Disclaimer: All dimensions, materials and drawings are approximate. Information is subject to change without notice, at the developer's absolute discretion. The actual area may vary from the stated area. Drawings are not to scale. All images used are for illustrative purposes only and do not represent the actual size, features, specifications, fittings and furnishings. The developer reserves the right to make revisions/alterations, at the absolute discretion without any liability whatsoever.

# NINTH FLOOR LAYOUT



● STUDIO

● 1 BHK

● 2 BHK

● 3 BHK PENTHOUSE

Disclaimer: All dimensions, materials and drawings are approximate. Information is subject to change without notice, at the developer's absolute discretion. The actual area may vary from the stated area. Drawings are not to scale. All images used are for illustrative purposes only and do not represent the actual size, features, specifications, fittings and furnishings. The developer reserves the right to make revisions/alterations, at the absolute discretion without any liability whatsoever.

# TENTH FLOOR LAYOUT



● STUDIO

● 1 BHK

● 2 BHK

● 3 BHK

Disclaimer: All dimensions, materials and drawings are approximate. Information is subject to change without notice, at the developer's absolute discretion. The actual area may vary from the stated area. Drawings are not to scale. All images used are for illustrative purposes only and do not represent the actual size, features, specifications, fittings and furnishings. The developer reserves the right to make revisions/alterations, at the absolute discretion without any liability whatsoever.

# ELEVENTH FLOOR LAYOUT



● STUDIO

● 1 BHK

● 2 BHK

● 3 BHK PENTHOUSE

Disclaimer: All dimensions, materials and drawings are approximate. Information is subject to change without notice, at the developer's absolute discretion. The actual area may vary from the stated area. Drawings are not to scale. All images used are for illustrative purposes only and do not represent the actual size, features, specifications, fittings and furnishings. The developer reserves the right to make revisions/alterations, at the absolute discretion without any liability whatsoever.

# TWELFTH FLOOR LAYOUT



● STUDIO

● 1 BHK

● 2 BHK

● 3 BHK PENTHOUSE

Disclaimer: All dimensions, materials and drawings are approximate. Information is subject to change without notice, at the developer's absolute discretion. The actual area may vary from the stated area. Drawings are not to scale. All images used are for illustrative purposes only and do not represent the actual size, features, specifications, fittings and furnishings. The developer reserves the right to make revisions/alterations, at the absolute discretion without any liability whatsoever.

# THIRTEENTH FLOOR LAYOUT



● STUDIO

● 1 BHK

● 2 BHK

● 3 BHK PENTHOUSE

Disclaimer: All dimensions, materials and drawings are approximate. Information is subject to change without notice, at the developer's absolute discretion. The actual area may vary from the stated area. Drawings are not to scale. All images used are for illustrative purposes only and do not represent the actual size, features, specifications, fittings and furnishings. The developer reserves the right to make revisions/alterations, at the absolute discretion without any liability whatsoever.

# FOURTEENTH FLOOR LAYOUT



● STUDIO

● 1 BHK

● 2 BHK

● 3 BHK PENTHOUSE

Disclaimer: All dimensions, materials and drawings are approximate. Information is subject to change without notice, at the developer's absolute discretion. The actual area may vary from the stated area. Drawings are not to scale. All images used are for illustrative purposes only and do not represent the actual size, features, specifications, fittings and furnishings. The developer reserves the right to make revisions/alterations, at the absolute discretion without any liability whatsoever.

# FIFTEENTH FLOOR LAYOUT



● STUDIO

● 1 BHK

● 2 BHK

● 3 BHK PENTHOUSE

Disclaimer: All dimensions, materials and drawings are approximate. Information is subject to change without notice, at the developer's absolute discretion. The actual area may vary from the stated area. Drawings are not to scale. All images used are for illustrative purposes only and do not represent the actual size, features, specifications, fittings and furnishings. The developer reserves the right to make revisions/alterations, at the absolute discretion without any liability whatsoever.



ITALIAN LEGACY.  
**NOW LIVED.**



BNW DEVELOPMENTS

بي ان دبليو للتطوير العقاري

33<sup>rd</sup> Floor, Uhora Tower, Business Bay, Dubai, UAE

☎ 800BNWUAE

🌐 BNW.AE

✉ INFO@BNW.AE